



Employees in the Swiss chemical Industry



INSTITUT DE CHIMIE
Université de Neuchâtel

**1998: 59'015 about 25'000 working
in and around Basel**

1985-1998: -10'983 (outsourcing!)

1990: Export: 18.4 billion SFr

1999: Export: 33.9 billion SFr

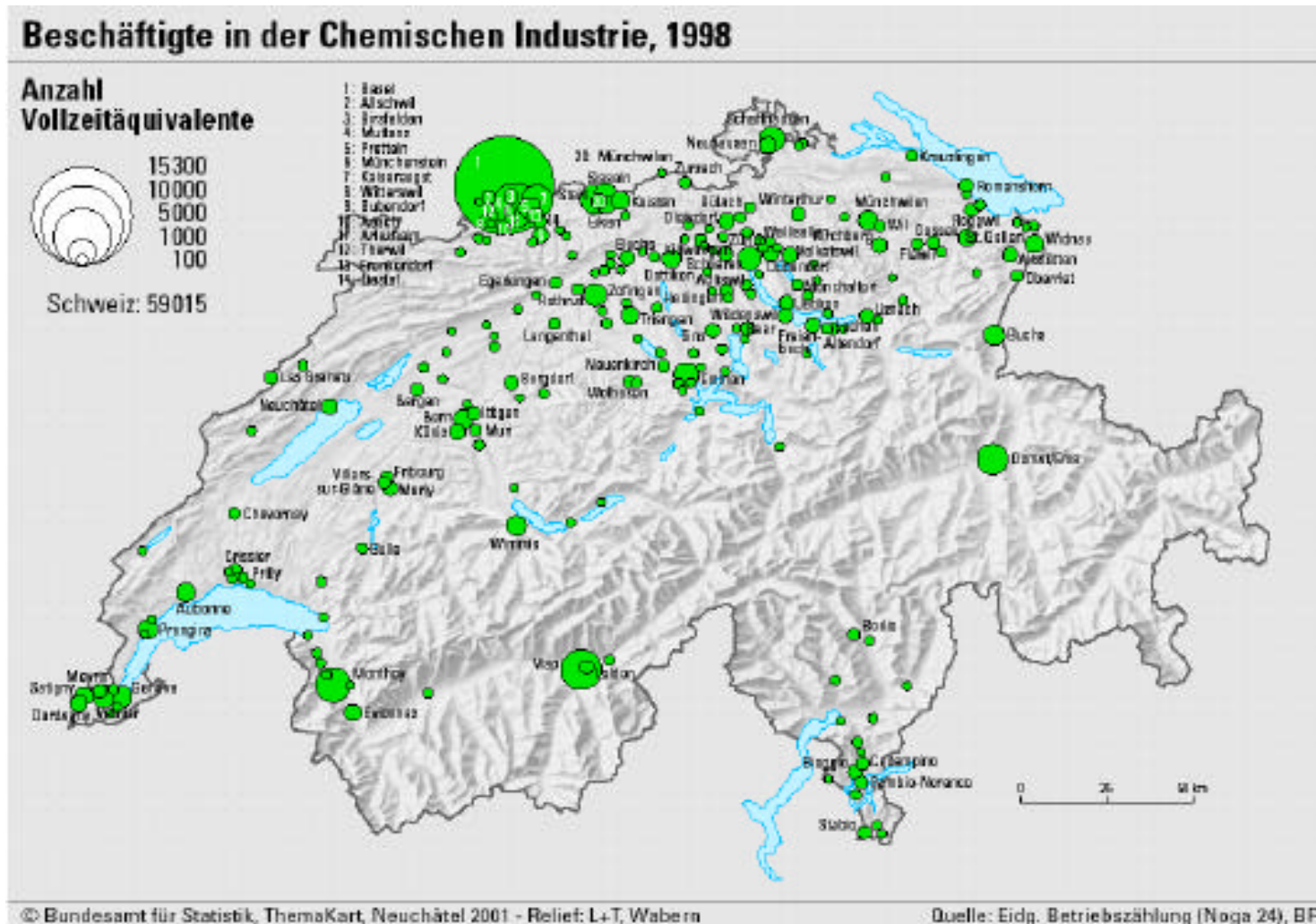


SCG

Distribution of the Employees



INSTITUT DE CHIMIE
Université de Neuchâtel





Origins of the Chemists from Novartis

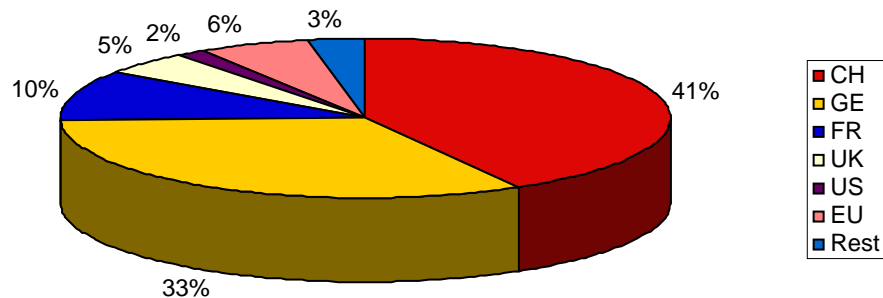


INSTITUT DE CHIMIE
Université de Neuchâtel

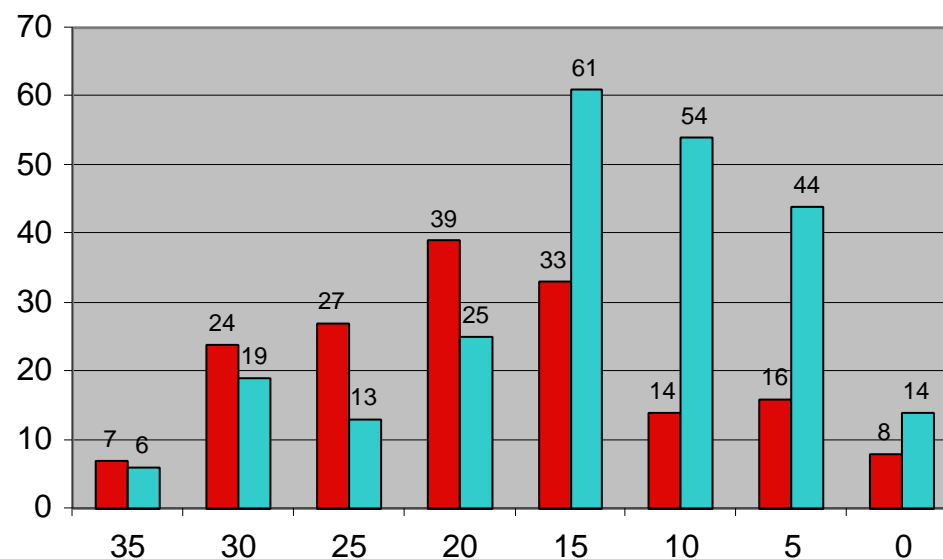
Situation 2001

CH: 169 (41.7%)

Foreigners.: 236 (58.3%)



Origins of chemists



Development of the distribution



Activities of Academics with Roche

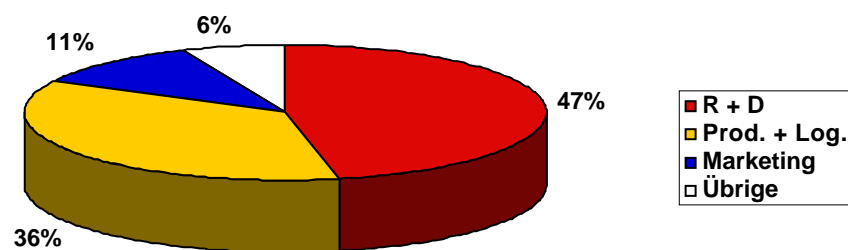


INSTITUT DE CHIMIE
Université de Neuchâtel

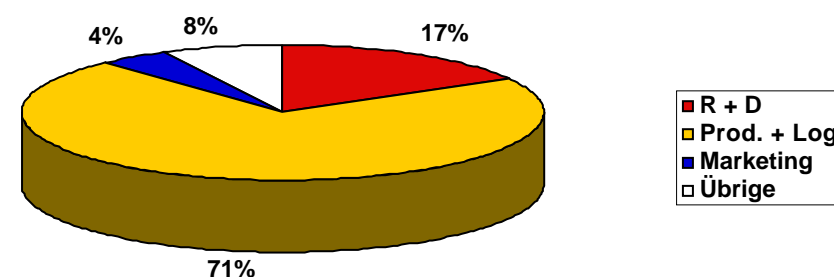
Situation 2001

Scientists: 1'471

Engineers: 253



Activities of scientists



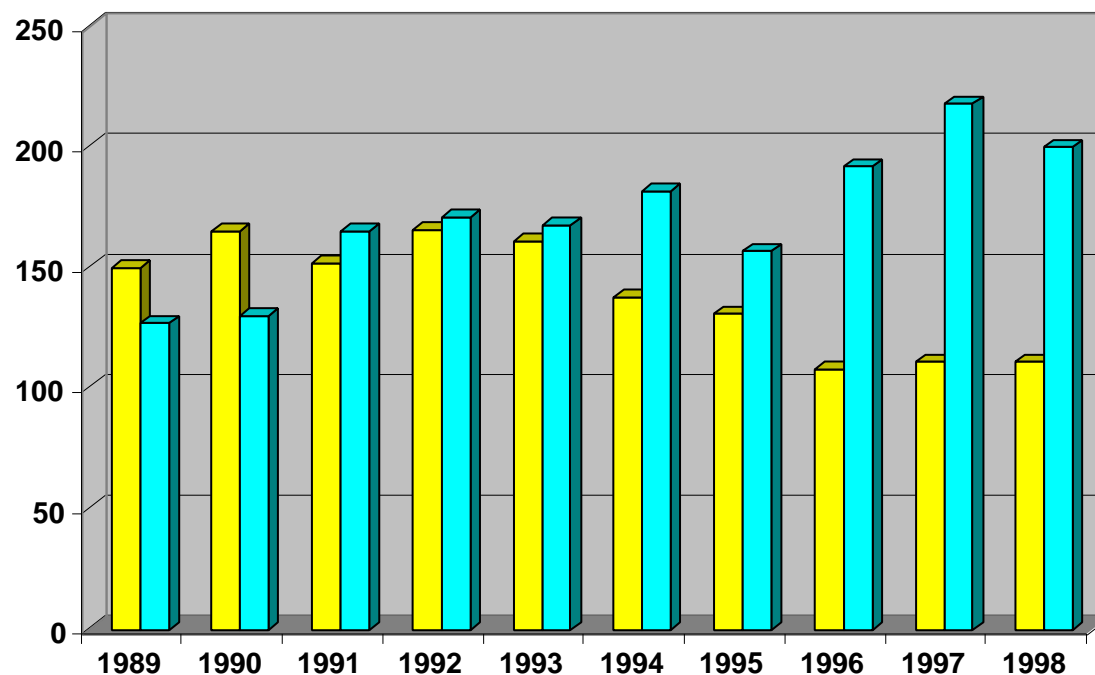
Activities of engineers



Diploma and Ph.D. in Switzerland



INSTITUT DE CHIMIE
Université de Neuchâtel



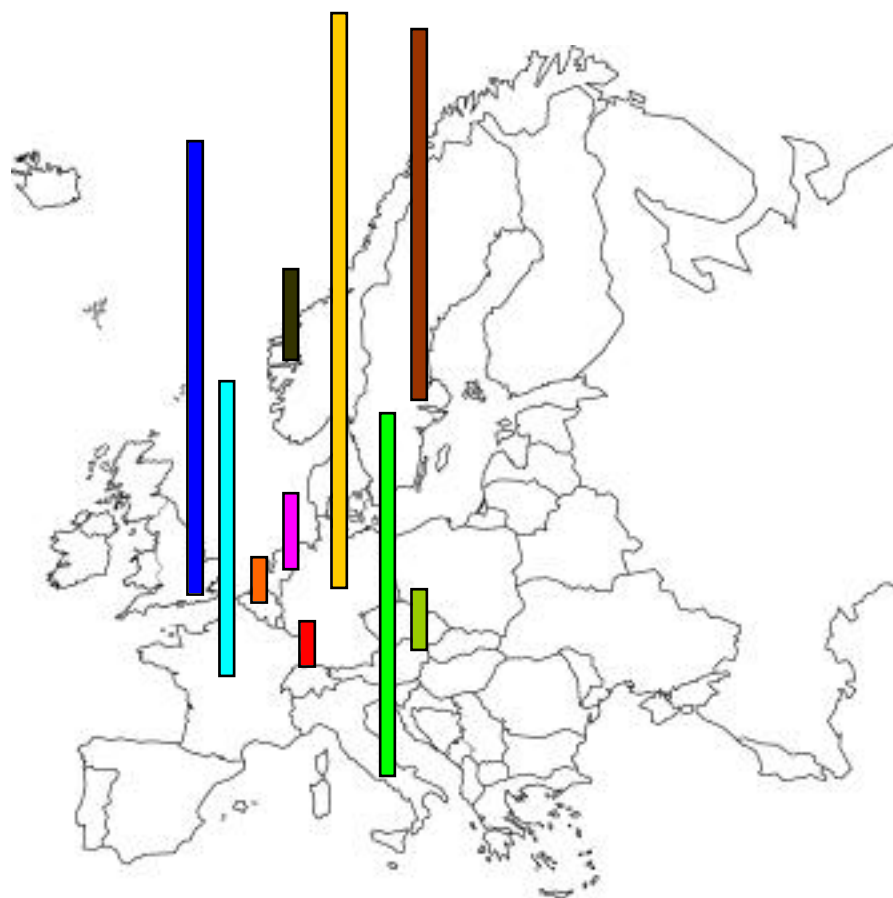
Diminution of the diploma in chemistry: **- 26% (-39)**
Increase of the Ph.D. in chemistry : **+57% (+73)**



Beginners in Chemistry in Europe



INSTITUT DE CHIMIE
Université de Neuchâtel



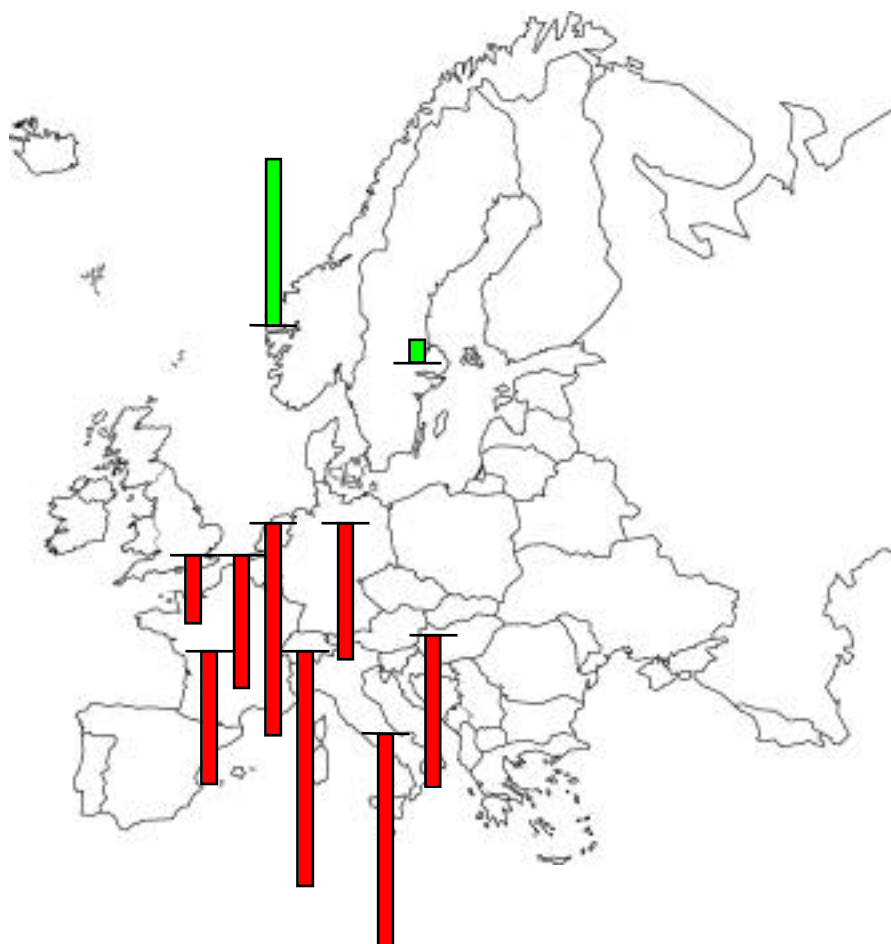
GE:	3'813
UK:	3'083
SE:	2'600 (450)
F:	2'497
I:	1'459 (471) [Pharma: 3'398]
NO:	624
NL:	510
AU:	411 (221)
CH:	289
B:	271



Beginners in Chemistry : Changes



INSTITUT DE CHIMIE
Université de Neuchâtel



GE:	- 36.1%	[1991 - 2000]
UK:	- 18.3%	[1990 - 1998]
SE:	+ 6.1%	[1995 - 2000]
	(- 23.7%)	
F:	- 34.6%	[1994 - 2000]
I:	- 56.7%	[1990 - 1999]
	(+ 84.7%)	Pharma
NO:	+ 43.6%	[1992 - 2000]
NL:	- 55.9%	[1992 - 1998]
AU:	- 39.6%	[1989 - 1998]
CH:	- 62.1%	[1991 - 2000]
B:	- 34.5%	[1990 - 2000]

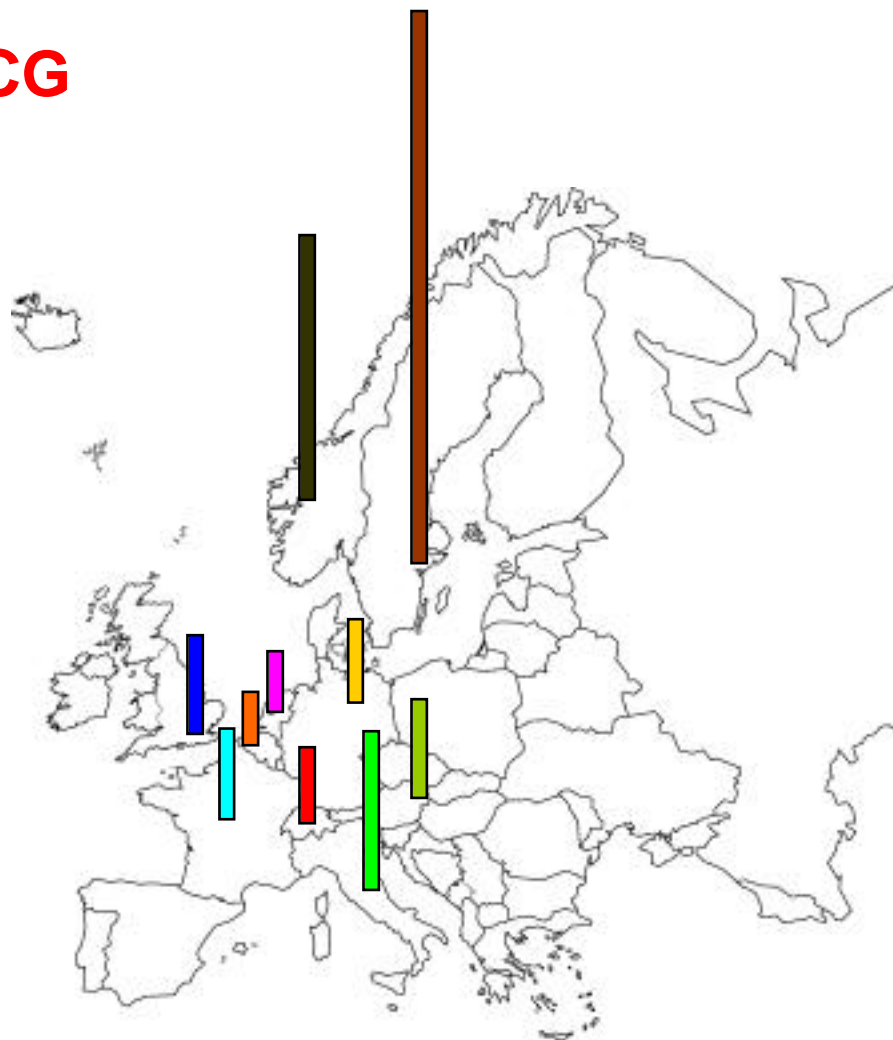


SCG

Beginners in Chemistry versus Number of Inhabitants



INSTITUT DE CHIMIE
Université de Neuchâtel



SE:	292.1
NO:	141.8
I:	84.2
UK:	50.7
AU:	50.7
D:	46.3
F:	43.4
CH:	40.4
NL:	32.5
B:	27.1

Compare:
US 45.0!